



ALMALUSA COMPORTA

Fact Sheet



T: +351 265 098 600 | M: reservas.cp@almalusahotels.com

GDS | AMADEUS HO LISALM | GALILEO/APOLLO HO H5302 | SABRE HO 600917 | WORLDSPAN HO LISAL

AlmaLusa Comporta is within a short walk, or even quicker bike ride, to the amazing Comporta beach and is on the doorstep of Comporta's wide range of fashionable boutiques, cafés, and restaurants. Guests may enjoy sweeping views from The RoofTop Bar, take a refreshing swim in the outdoor pool, try delicious and healthy food and beverages, and indulge in an array of bespoke massages and treatments at the Spa Suite. Our dedicated Concierge service will tailor make local experiences for our guests, from Alentejo wine tastings, horse riding along the beach, dolphin watching tours, golfing at one of the best courses in the country, bike rides across the rice fields and trekking in the Serra of Grândola.

"AlmaLusa Comporta is mindful of our carbon footprint and is seeking to be as sustainable a destination as is possible. All our built areas are careful conversions of pre-existing buildings, we have substantial solar power generation on site, and we offer car-free visits with airport transfer services and e-bikes on site for local travel needs."

AlmaLusa Comporta
Rua Pedro Nunes, n.º 3 7580-652 Comporta
(+351) 265 098 600 | info.cp@almalusahotels.com
www.almalusahotels.com/comporta



Accommodation | 53 rooms, of which 31 are suites

Eat & Drink

- Duna breakfast room | 8am-11am | open to the general public
- AlmaLusa Café | 8am-5pm | open to the general public
- The RoofTop Bar | 5pm-11pm | open to the general public
- Library Bar | 5pm-11pm (bar service) | open to the general public
- Pool Terrace | 8am-6pm | exclusive for AlmaLusa Comporta guests
- Grab&Go service | 8am-10.30pm | exclusive for AlmaLusa Comporta guests

Facilities

- Spa Suite by Elemental Herbology | 10am-8pm | open to the general public
- Outdoor Wellness Area | 7.30am-8pm | exclusive for AlmaLusa Comporta guests
- Swimming Pool | exclusive for AlmaLusa Comporta guests

Room type	Qt.	View	Area	Special Features
Single Room	1	Comporta Village	13sqm 139sqft	For one person or communicating with Superior Room
Superior Room	13	Comporta Village or Courtyard	17sqm 182sqft	Entry level room
Garden Room	6	Courtyard	20sqm 215sqft	Private furnished garden with a minimum of 10sqm/107sqft
Terrace Room	1	Courtyard	20sqm 215sqft	12sqm/129sqft private furnished terrace

AlmaLusa Comporta
Rua Pedro Nunes, n.º 3 7580-652 Comporta
(+351) 265 098 600 | info.cp@almalusahotels.com
www.almalusahotels.com/comporta



Suite type	Qt.	View	Area	Special Features
Superior Suite	9	Garden or Rice fields	37sqm 398sqft	<p>Open-space suite with a living area and kitchen</p> <p>Can accommodate 1 adult or 2 children in a sofa bed</p> <p>No private outdoor space</p>
Pool Suite	6	Pool	36sqm 387sqft	<p>Open-space suite with a living area and kitchen</p> <p>Can accommodate 1 adult or 2 children in a sofa bed</p> <p>8sqm/86sqft private furnished balcony with direct access to the pool</p>
Garden Suite	4	Garden	37sqm 398sqft	<p>Open-space suite with a living area and kitchen</p> <p>Can accommodate 1 adult or 2 children in a sofa bed</p> <p>40sqm/430sqft private furnished garden</p>
Terrace Suite	10	Pool or Rice fields	36sqm 387sqft	<p>Open-space suite with a living area and kitchen</p> <p>Can accommodate 1 adult or 2 children in a sofa bed</p> <p>30sqm/322sqft private furnished rooftop terrace, which can be accessed from outside by shared stairs</p>
Deluxe Suite	2	Rice fields	50sqm 538sqft	<p>One-bedroom suite with living area and kitchen</p> <p>Can accommodate 1 adult or 2 children in a sofa bed</p> <p>Access to an 8sqm/86sqft balcony for 50€ extra/night</p>



Accommodation

All our rooms are individually designed, inspired by the Comporta lifestyle, for a luxurious coastal rural experience, relaxed yet exclusive.

Comfort and simplicity have been important concerns and therefore the following list has been carefully curated:

- King or Twin Colmol Spa **Premium Mattresses** with 100% luxury percale cotton sheets over an 8cm feather mattress topper, anti-allergy duvets, and feather pillows
- Power shower & 1800w semi-professional hairdryer
- LG Smart TV & In-room electronic laptop safe
- LG Air conditioning
- High speed internet with state-of-the-art access points for guests to have a premium Wi-Fi experience
- Portuguese bathroom amenities
- Welcome minibar stock (extra refill 10 euros day) and Nespresso coffee station with daily replacement
- Our **exclusive Suites** have a kitchen equipped with a dishwasher, ceramic hob, fridge and kettle, as well as all kitchen utensils needed for a comfortable stay

The following **services** are included for all our Rooms and Suites:

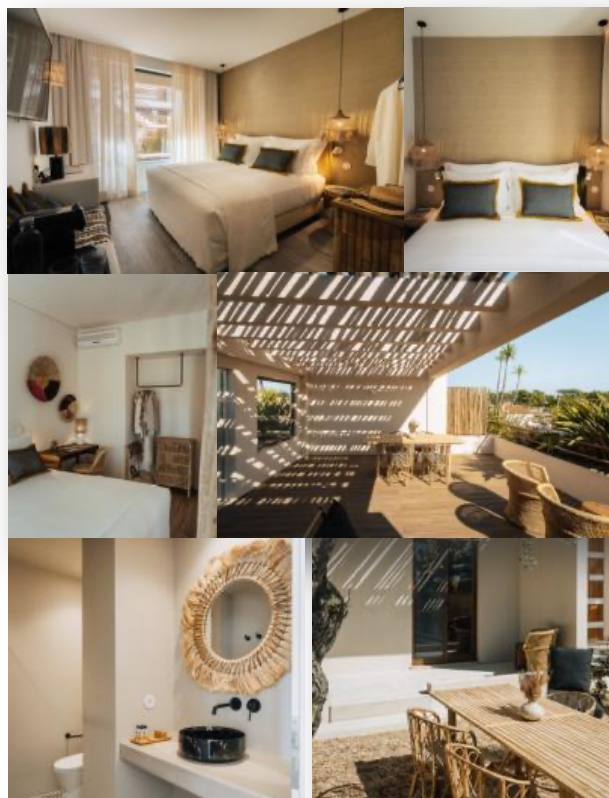
- 2 bottles of water per day (sparkling and still)
 - Daily housekeeping service
 - Satellite and fibre cable TV Channels
 - Complimentary 4G Samsung Smartphone with 30 minutes international calls per day and unlimited internet.
- Guests also have access to the AlmaLusa App with recommendations, restaurant reservations, taxis, and other useful information. There is also a 24/7 chat with Reception

Available **on request**:

- AlmaLusa Concierge 24/7
- Pillow menu
- Iron and ironing Board
- Accessible room
- Baby cot

Available **on request, subject to an additional charge**:

- Laundry and dry-cleaning services
- Baby-sitting service
- Sofa bed (available only in Suites)





Policies

Check-in 4pm | Check-out 11am

VAT is included in room **rates**.

Non-smoking property in line with legislation. Different restrictions may be applied to open air facilities.

Identification | For security purposes, check-in can only be processed with a valid ID document from each one of the guests.

Guarantee Policy | Reservations must be guaranteed with a valid credit card at the time of the booking. The amount of one night will be pre-authorised 8 days prior to arrival. The payment for the stay shall be made at check-in. Promotional or Pre-Paid Rates will be charged at the time of booking. If the Credit Card Holder is not travelling, a third-party authorisation form must be filled and signed, and a copy of his ID must be presented. The hotel reserves the right to refuse any reservation that does not meet these requirements. For more information, please contact us at info.cp@almalusahotels.com.

Group Reservation | The website booking engine can only be used to make individual reservations, less than five rooms. For bookings of five or more rooms, please contact the hotel. The hotel reserves the right to apply different group cancellation and payment policies.

Cancellations | Direct reservations can be cancelled or modified. To cancel or modify your reservation and avoid a no-show penalty, please contact us at reservas.cp@almalusahotels.com. Cancellations are only valid upon written confirmation from **AlmaLusa Comporta**. Not applicable to non-refundable rates and packages.

Early Check-In | To guarantee early check-in, before 4pm, make sure to book the room for the previous night. Contact us for more information.

Late Check-Out | Up to 12noon – complimentary and subject to availability. After 12noon – full daily room rate, subject to availability.

Additional Guests | Children up to 18 years old must be accompanied by adults. Rooms are for double occupancy only. A crib for children up to 3 years old might be placed in the room, subject to availability. Suites can accommodate up to 3 people, with the third person sleeping on a sofa bed. For more information and availability, please contact our Reservations department at reservas.cp@almalusahotels.com.

Disabled Guests | Our facilities are prepared for disabled guests. Please contact us for more information.

Dogs | More than 1 year old dogs up to 15kg are allowed in our Garden Suites, subject to availability. A fee of 30€ per day and per dog will be charged upon arrival. A deposit of 100€ will be charged at check-in and returned at the end of the stay if no extra cleaning procedure is required. Specific rules apply to your dogs' stays. Please contact us for more information.

Parking | Limited indoor and outdoor parking spaces available, subject to a daily charge. Please contact us for more information.