

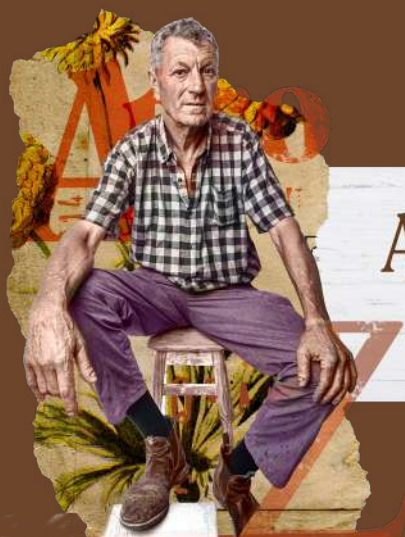


ALMALUSA
COMPORTA

E-BROCHURE

A Heavenly Retreat

Inspired by the local people, architecture and heritage



AlmaLusa Comporta

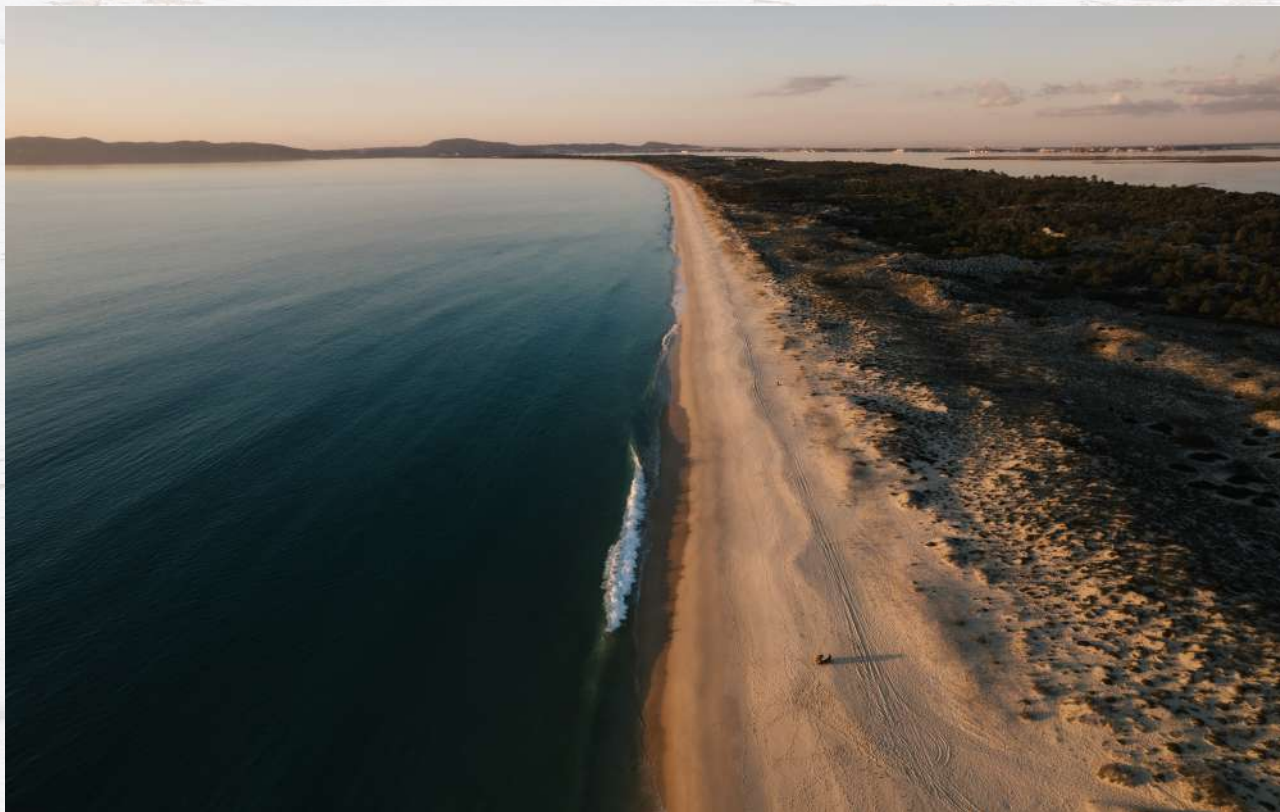
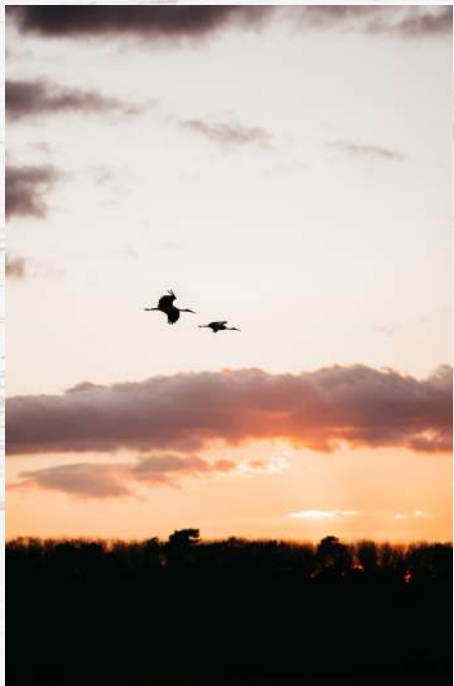
AlmaLusa Comporta is just 1 1/2 hrs away from Lisbon, in the heart of the village of Comporta, only a 15-minute walk to the beach and on the doorstep of a wide range of fashionable boutiques, cafés, and restaurants.

In a town where each stone has its own history, AlmaLusa Hotels created a unique hotel with 53 rooms, of which 31 are suites, inspired by the local people, architecture, and heritage. Guests are invited to unplug and discover an unmatched destination next to the Sado river, with some of the most beautiful beaches on the Alentejo coast and rice fields that carpet the ground for as far as the eye can see.

In our renovated buildings, guests are able to enjoy sweeping views from *The RoofTop Bar*, take a refreshing swim in the outdoor pool and try delicious and healthy food and beverages.

Our Concierge service is available 24/7, to help guests uncover this beautiful destination.







Sustainability

It is all about telling the story of each location, respecting the locals, and helping to protect their heritage

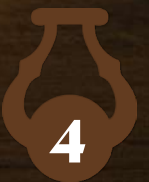
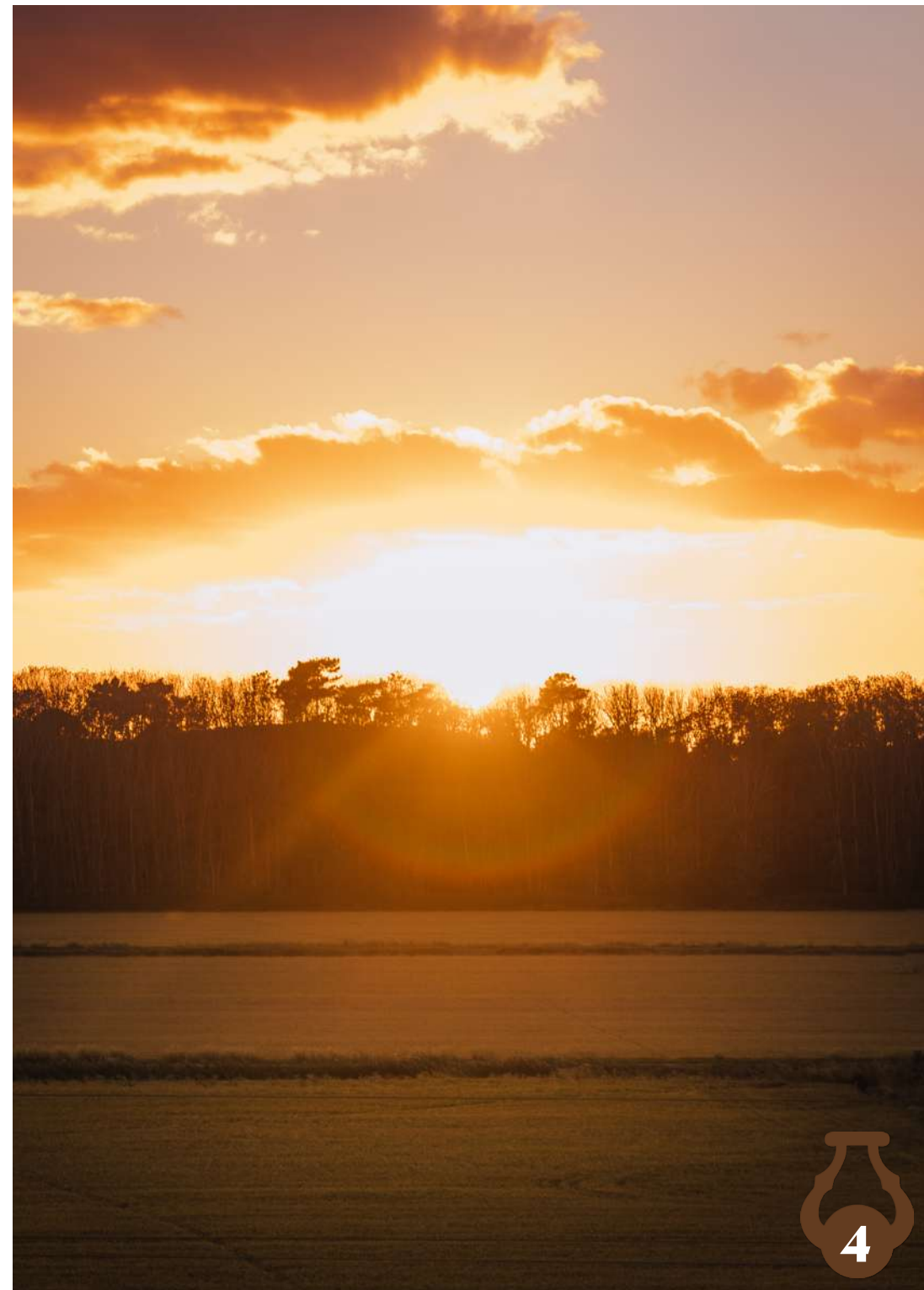
AlmaLusa Hotels strongly believes that the hospitality industry must play an active role in respecting the environment and participating in the community, to promote its sustainable development. For AlmaLusa, sustainability is more than **environmental preservation** - it is also about **social responsibility**.

The AlmaLusa Comporta project was based on the **rehabilitation of a pre-existing structure**. Locally sourced material and pieces crafted by regional artisans were used to renovate and decorate rooms and public facilities.

To encourage guests to use their own cars less, we provide pick-up services for those arriving at the Lisbon airport (additional cost). **Bikes** are also available for hire on-site.

The food served at our premises is prepared with the freshest produce, herbs, and in-season **ingredients, grown locally** whenever possible.

A **permanent collection of art** can be found throughout the hotel's public spaces and includes works by local artists that portray the beautiful region of Comporta.





Rooms & Suites

All rooms were inspired by the Comporta lifestyle, for a luxurious coastal rural experience, relaxed yet exclusive.

- King or Twin Colmol Spa **Premium Mattresses** with 100% luxury percale cotton sheets over an 8cm feather mattress topper, anti-allergy duvets, and feather pillows
- **Power shower**
- 1800W semi-professional **hairdryer**
- **LG Smart TV**
- In-room electronic laptop **safe**
- **LG Air conditioning**
- **Wi-Fi**
- Portuguese bathroom **amenities**
- Welcome **minibar** stock (extra refill 10 euros per day)
- **Nespresso coffee station** with daily replacement

All **Suites** have a kitchen equipped with a dishwasher, ceramic hob, fridge and kettle, as well as all kitchen utensils needed for a comfortable stay.





Comfort & Care

The following services are included for all our rooms and suites:

- 2 bottles of water per day (sparkling and still)
- Daily housekeeping service
- Satellite & fibre cable TV Channels
- Complimentary 4G Samsung Smartphone with 30 min of national and international calls per day, unlimited internet and our app

Available on request:

- AlmaLusa Concierge 24/7
- Pillow menu
- Iron and ironing board
- Accessible room
- Baby cot

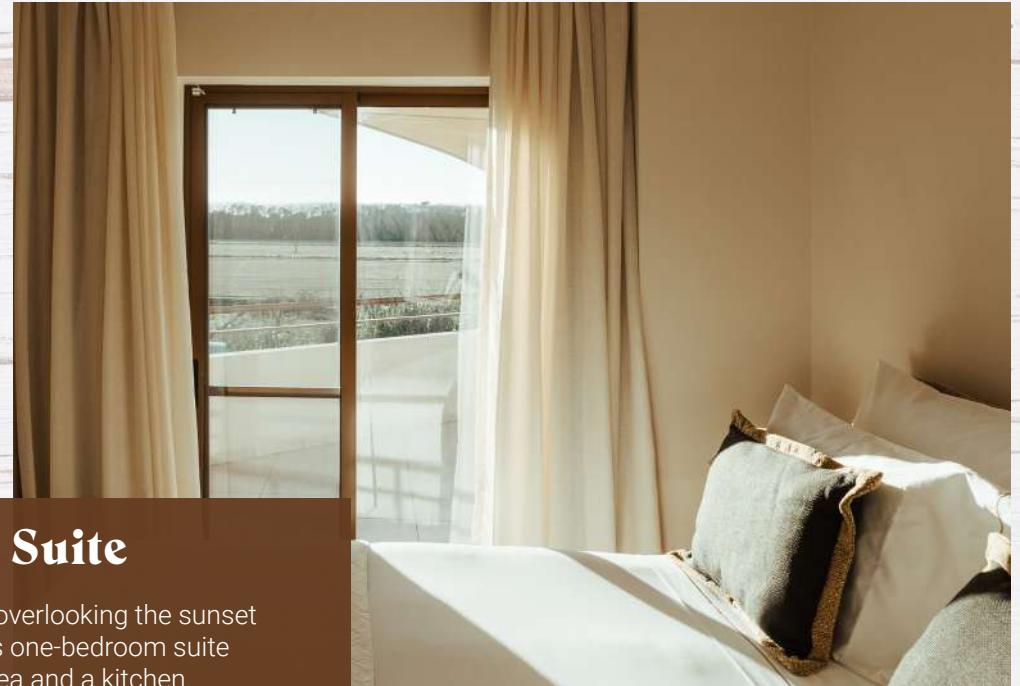
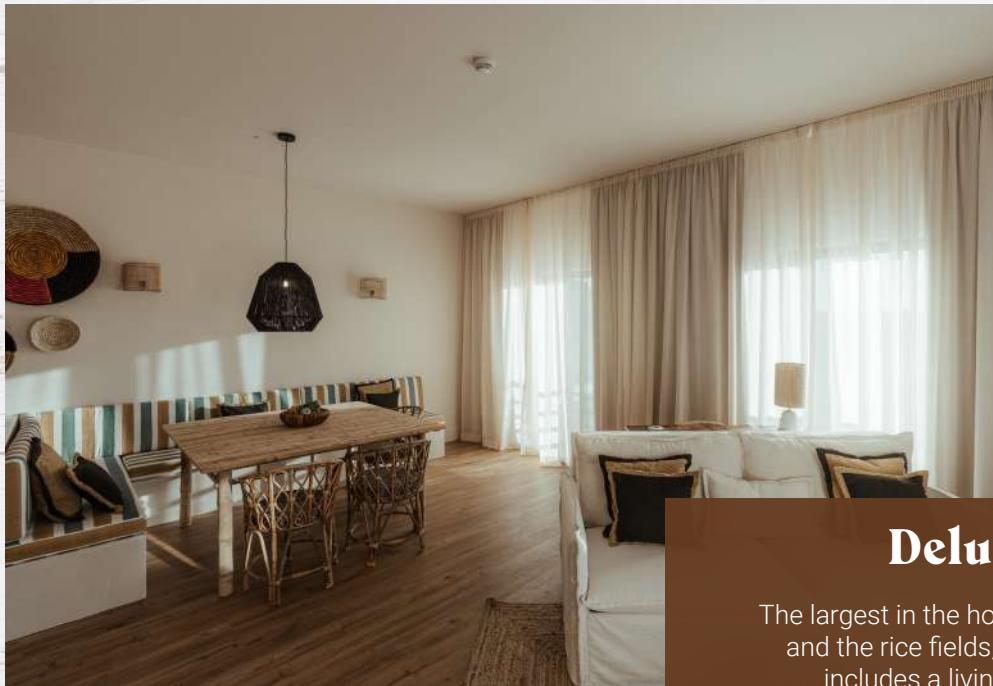
Available on request, subject to an additional charge:

- Laundry and dry cleaning services
- Babysitting service
- Sofa bed (available only in Suites)



Deluxe Suite





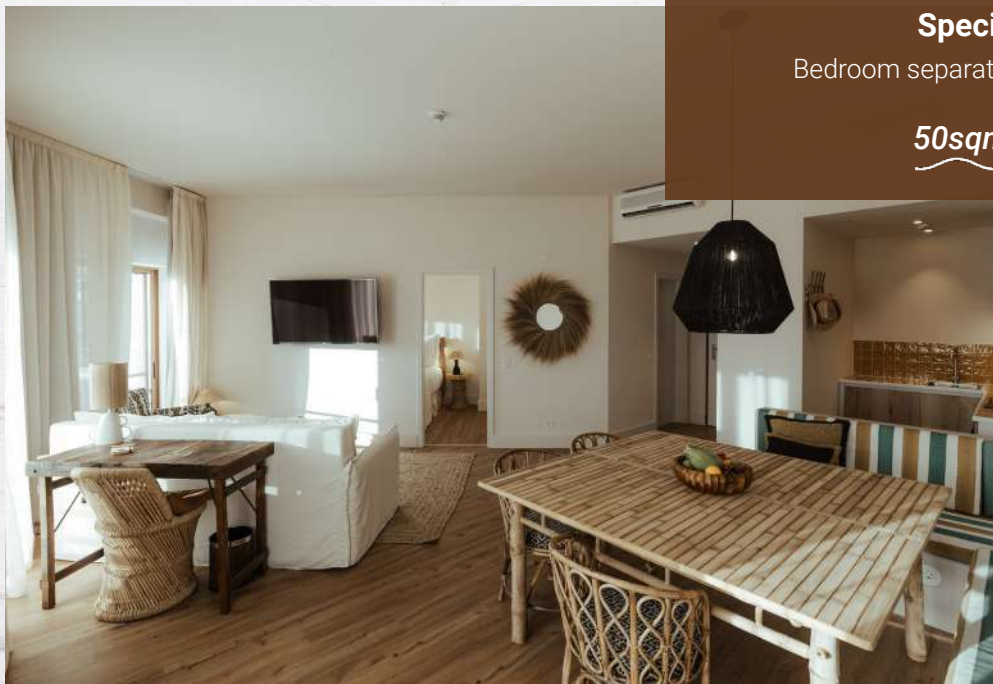
Deluxe Suite

The largest in the hotel, overlooking the sunset and the rice fields, this one-bedroom suite includes a living area and a kitchen.

Special Feature

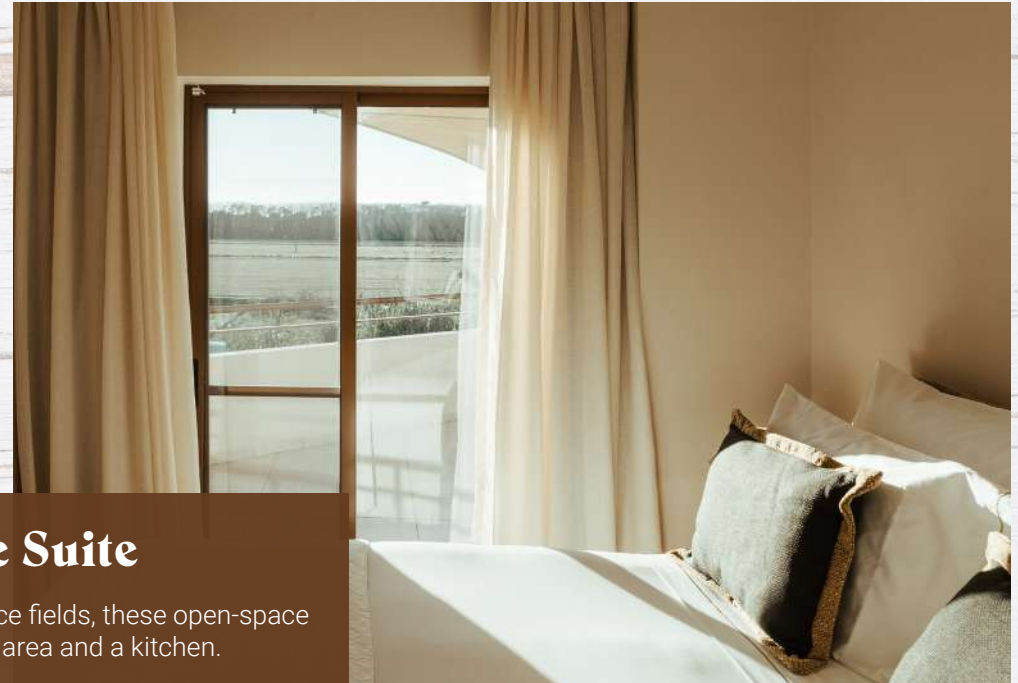
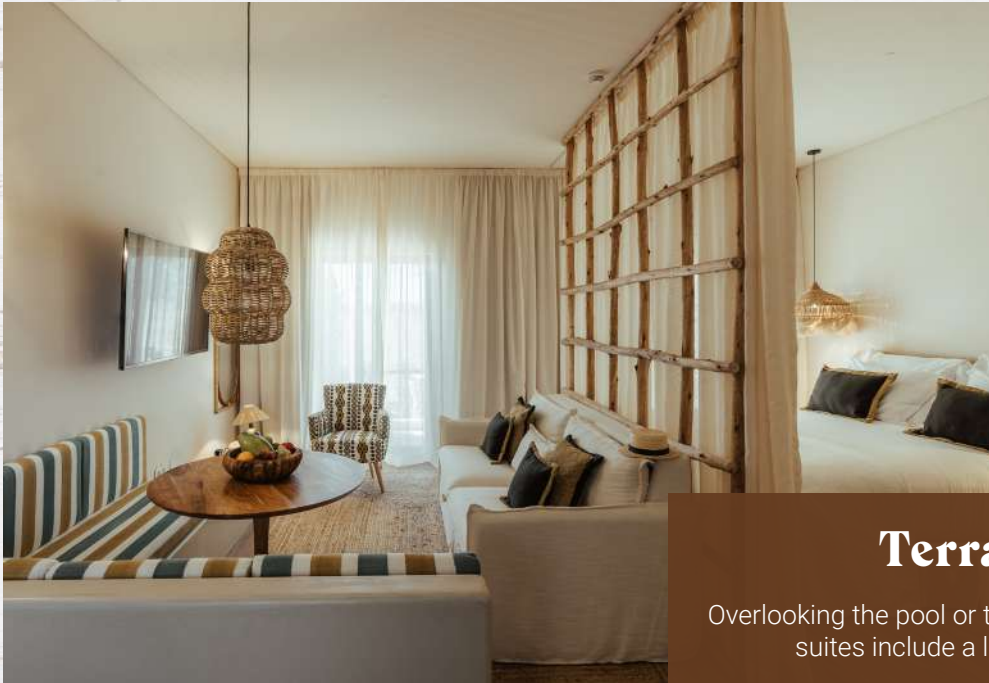
Bedroom separated from the living room

50sqm - 538sqft



Terrace Suite





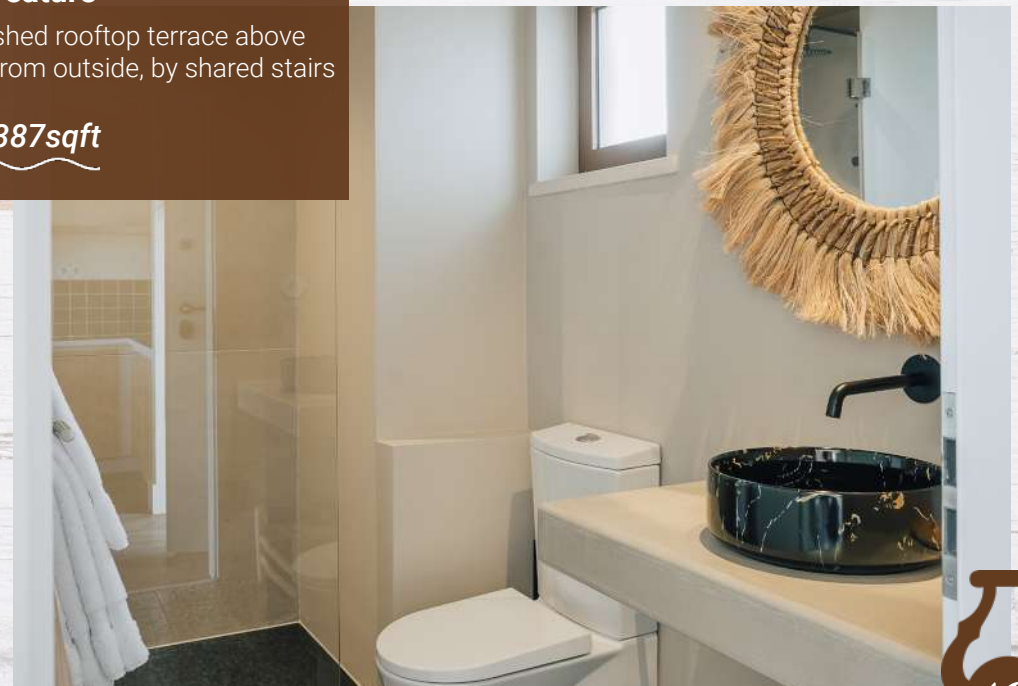
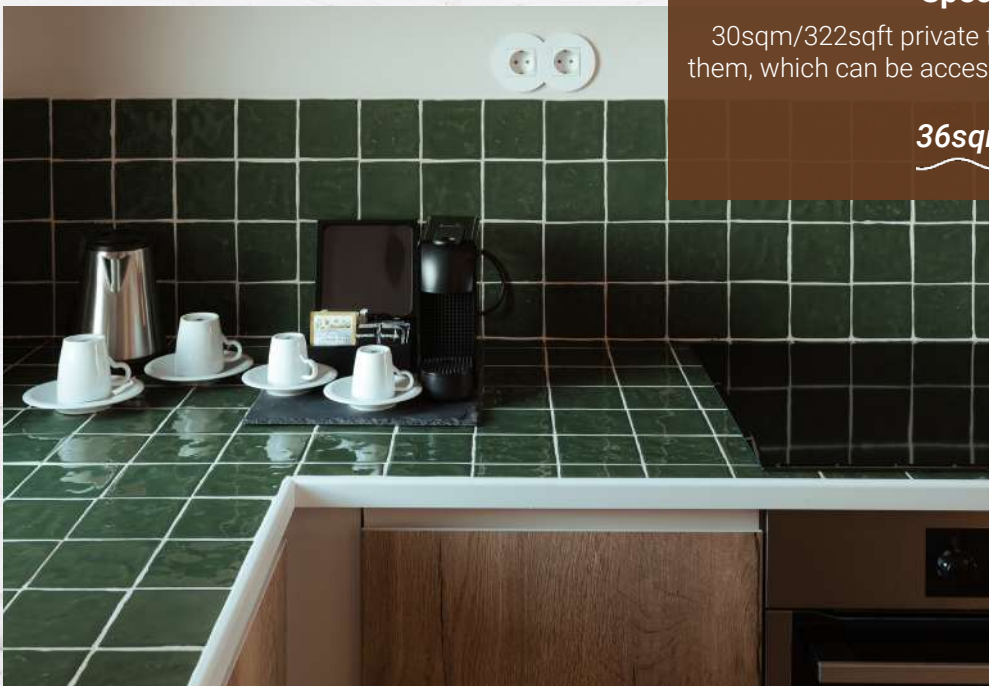
Terrace Suite

Overlooking the pool or the rice fields, these open-space suites include a living area and a kitchen.

Special Feature

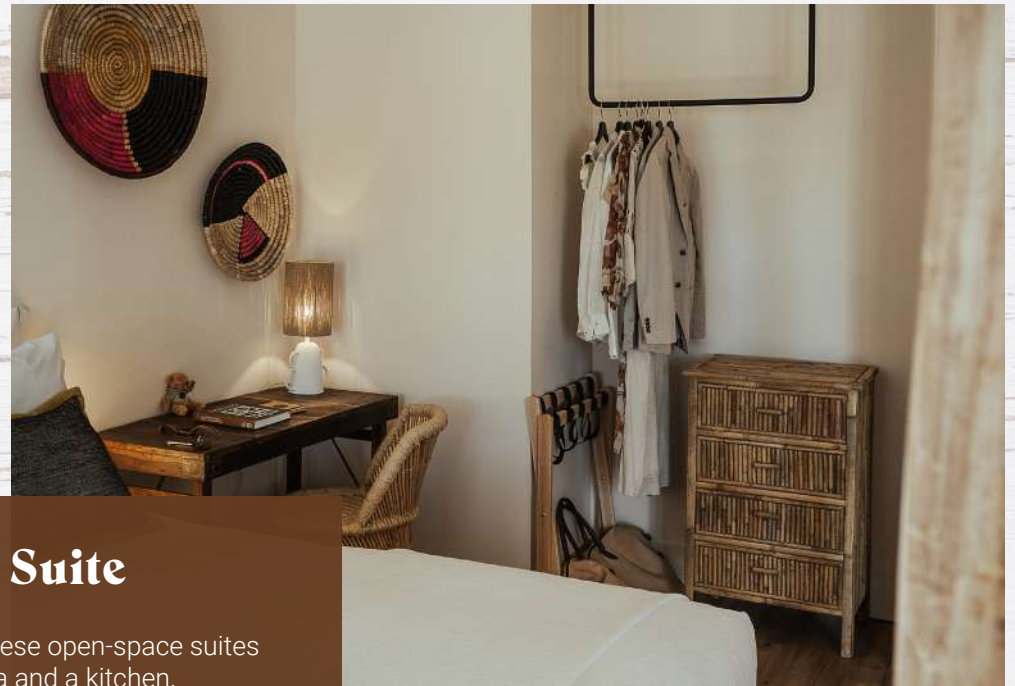
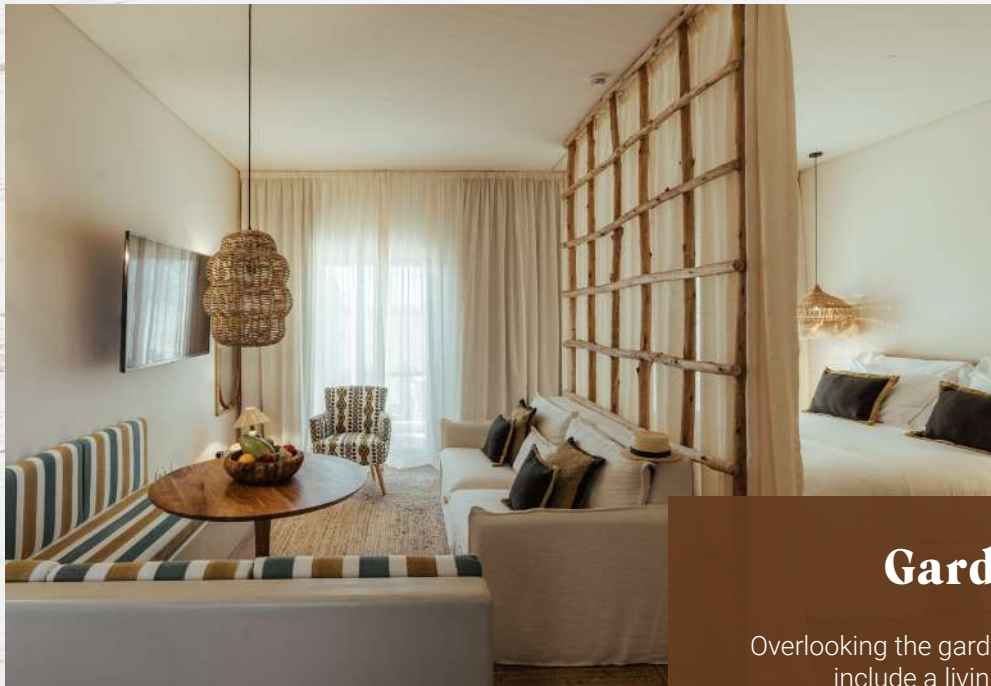
30sqm/322sqft private furnished rooftop terrace above them, which can be accessed from outside, by shared stairs

36sqm - 387sqft



Garden Suite





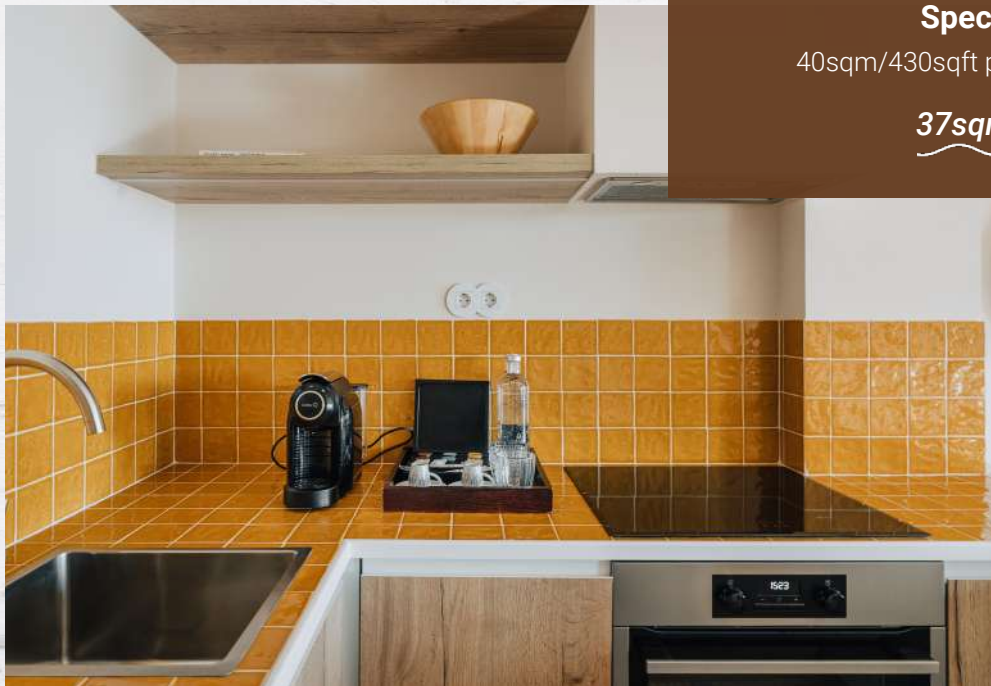
Garden Suite

Overlooking the garden, these open-space suites include a living area and a kitchen.

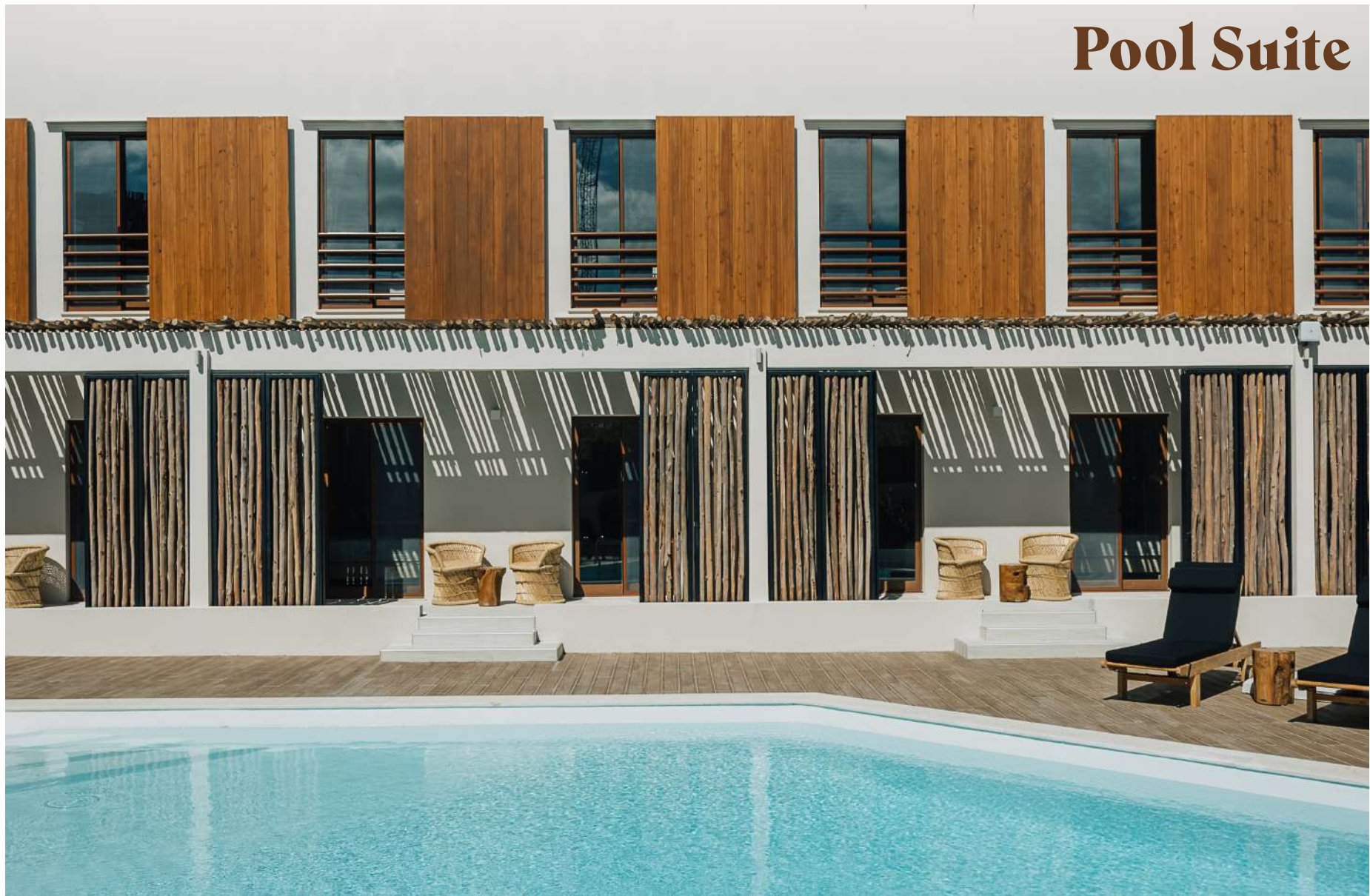
Special Feature

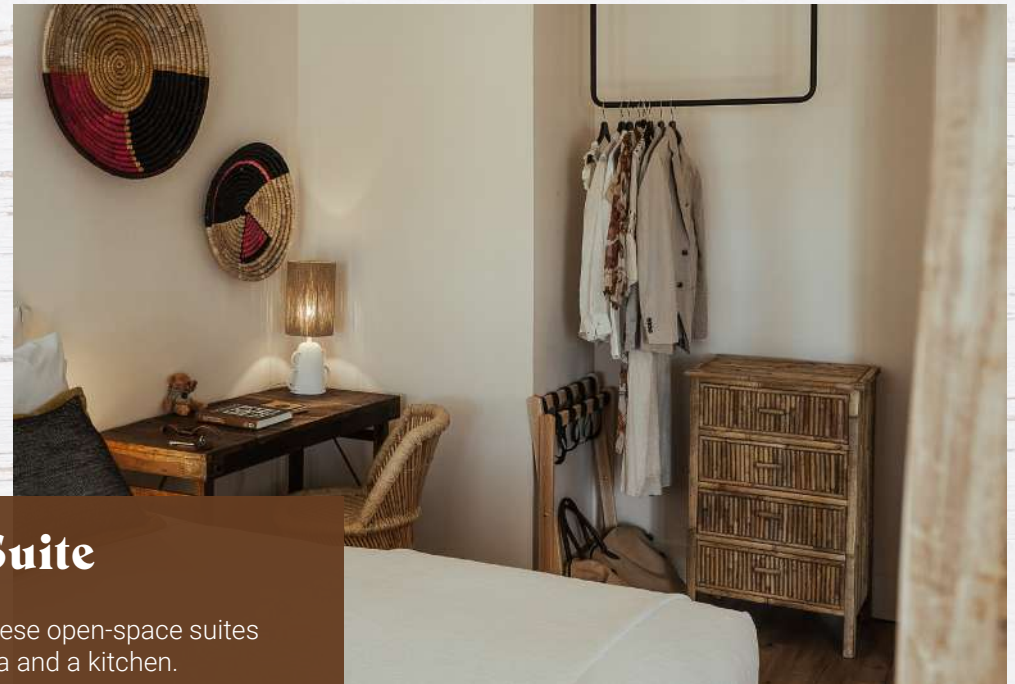
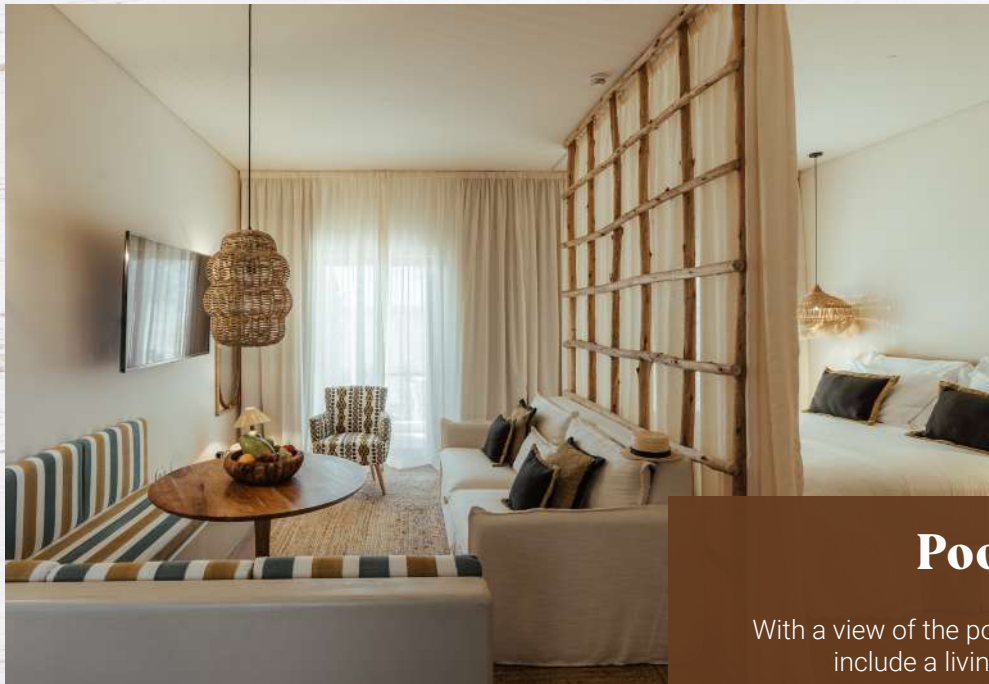
40sqm/430sqft private furnished garden

37sqm - 398sqft



Pool Suite





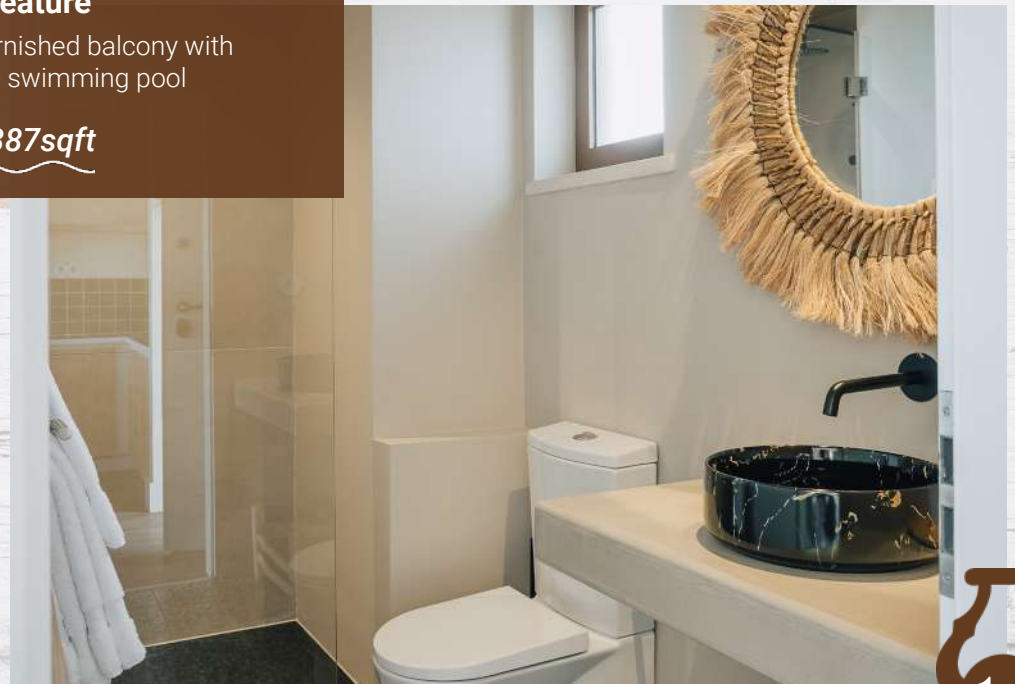
Pool Suite

With a view of the pool, these open-space suites include a living area and a kitchen.

Special Feature

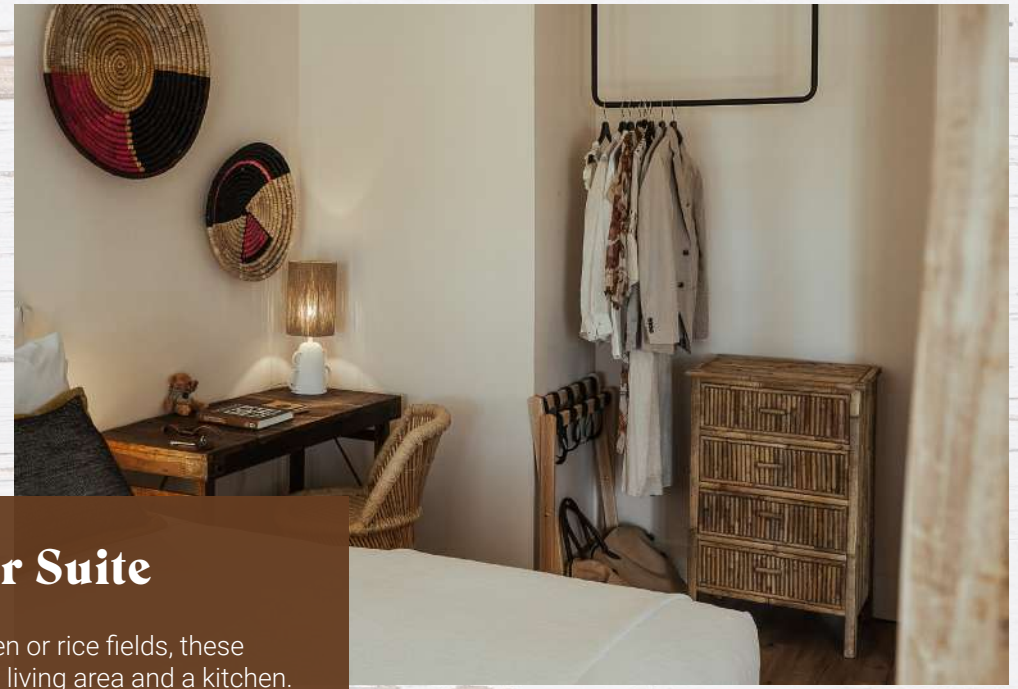
8sqm/86sqft private furnished balcony with direct access to the swimming pool

36sqm - 387sqft



Superior Suite





Superior Suite

With a view of the garden or rice fields, these open-space suites include a living area and a kitchen.

Special Feature

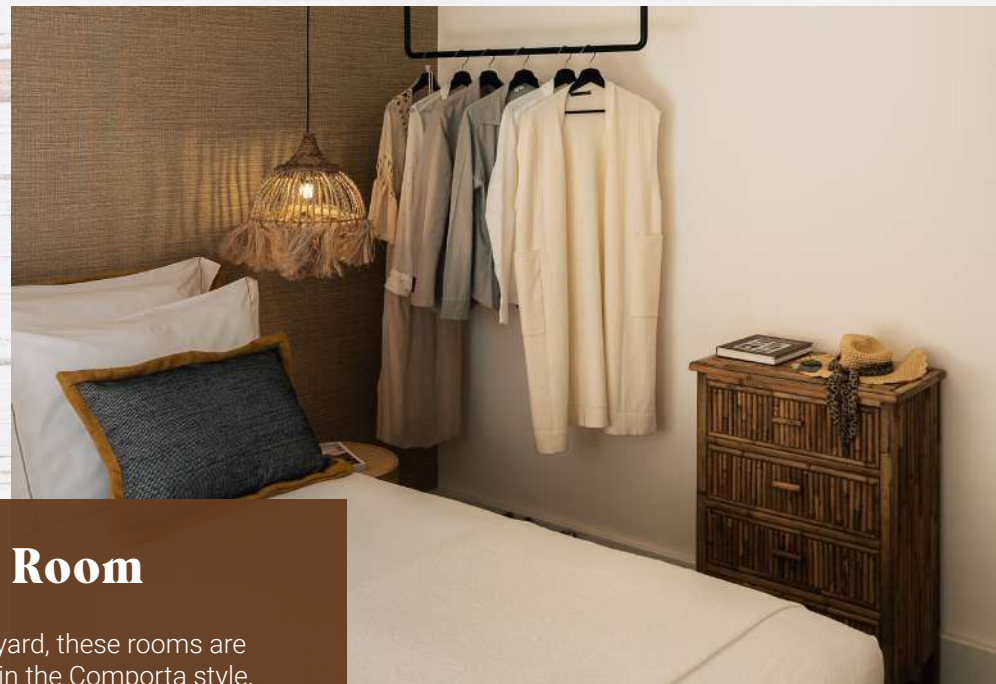
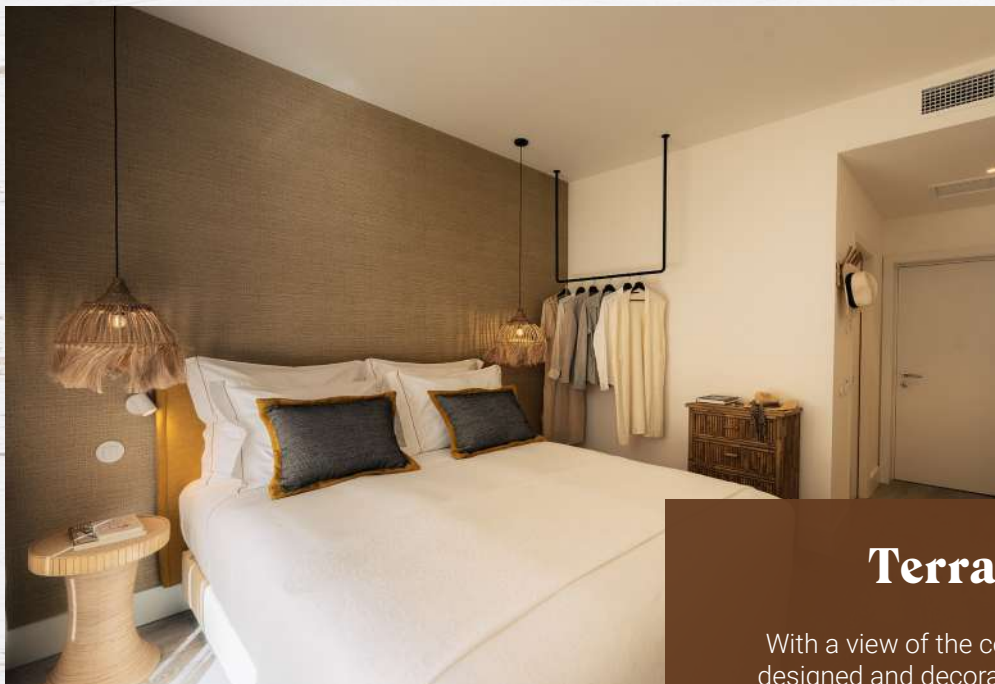
No private outdoor space

37sqm - 398sqft



Terrace Room





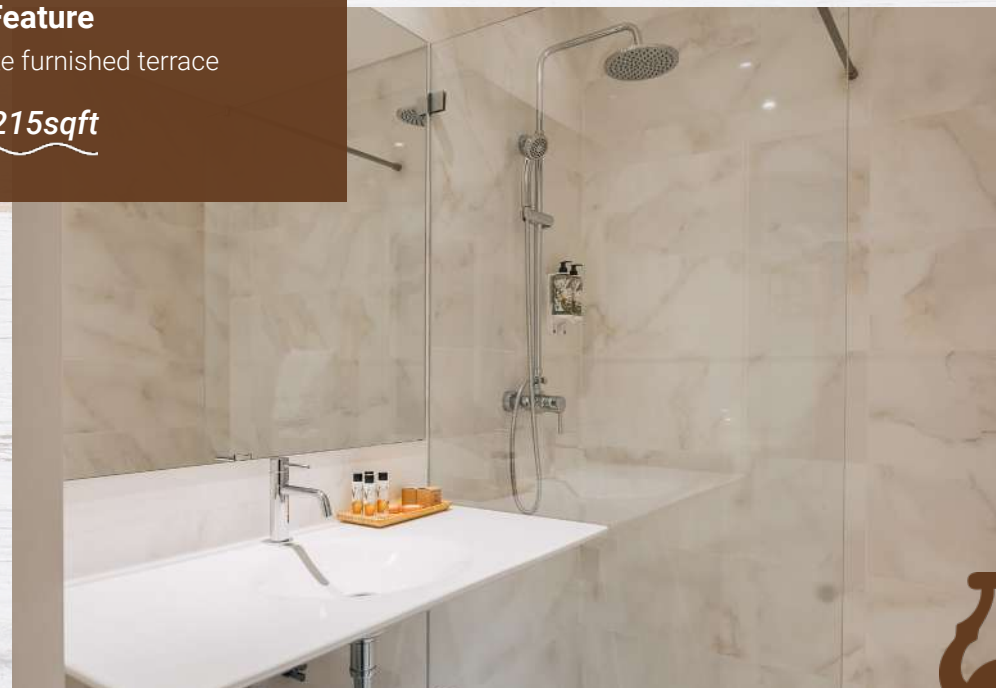
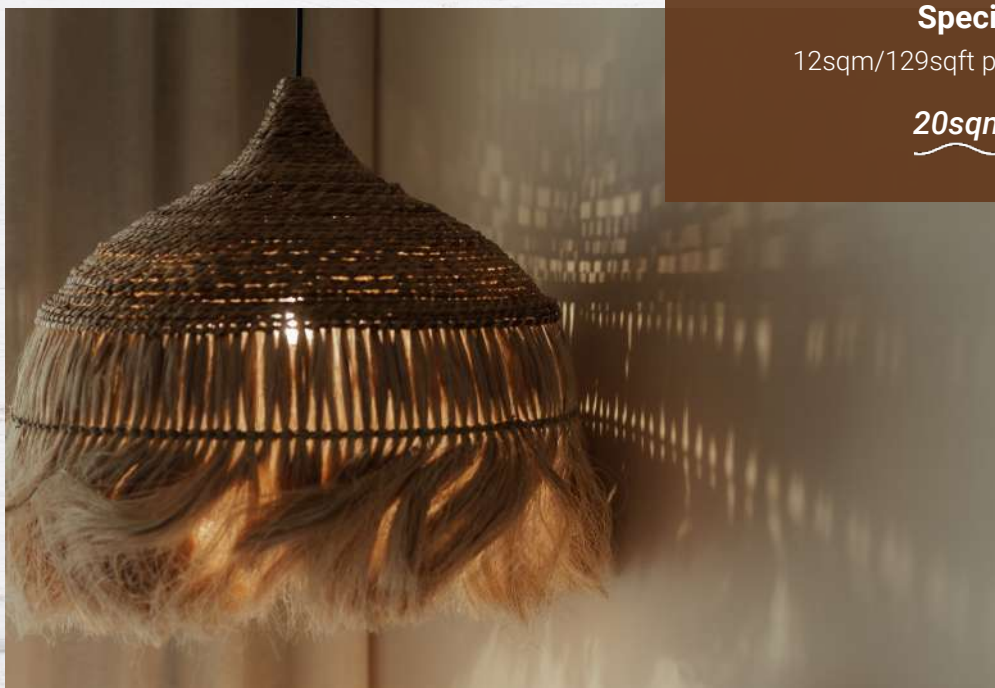
Terrace Room

With a view of the courtyard, these rooms are designed and decorated in the Comporta style.

Special Feature

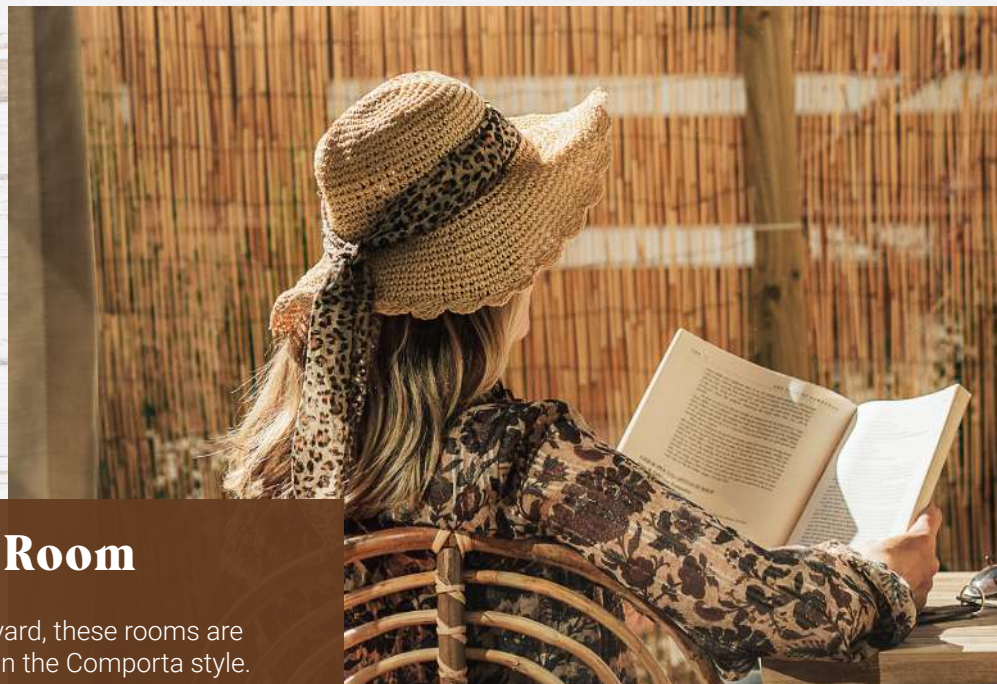
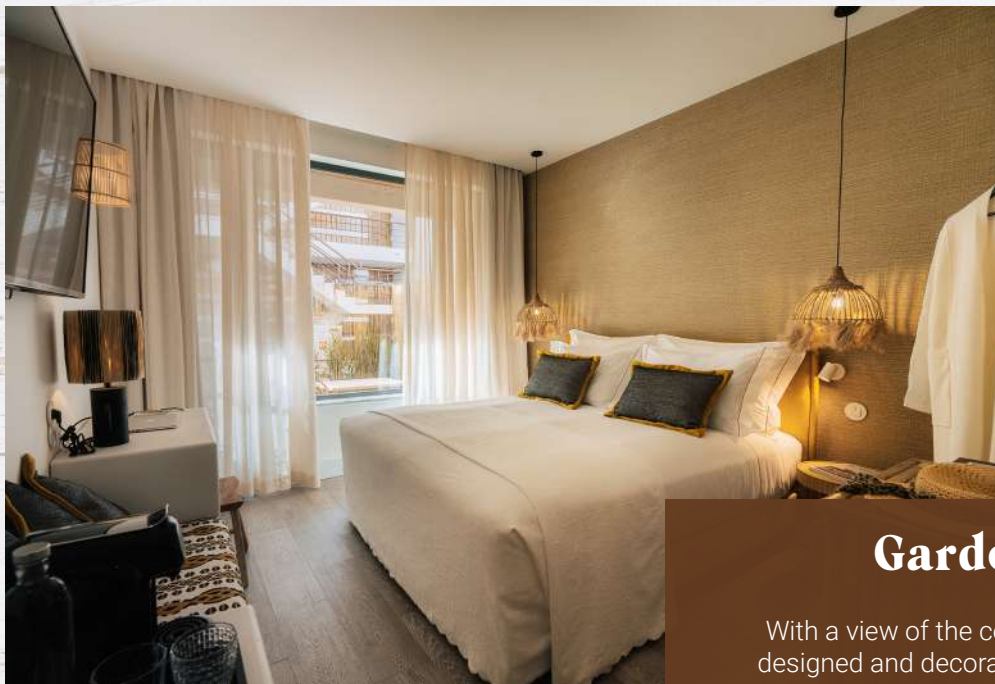
12sqm/129sqft private furnished terrace

20sqm - 215sqft



Garden Room





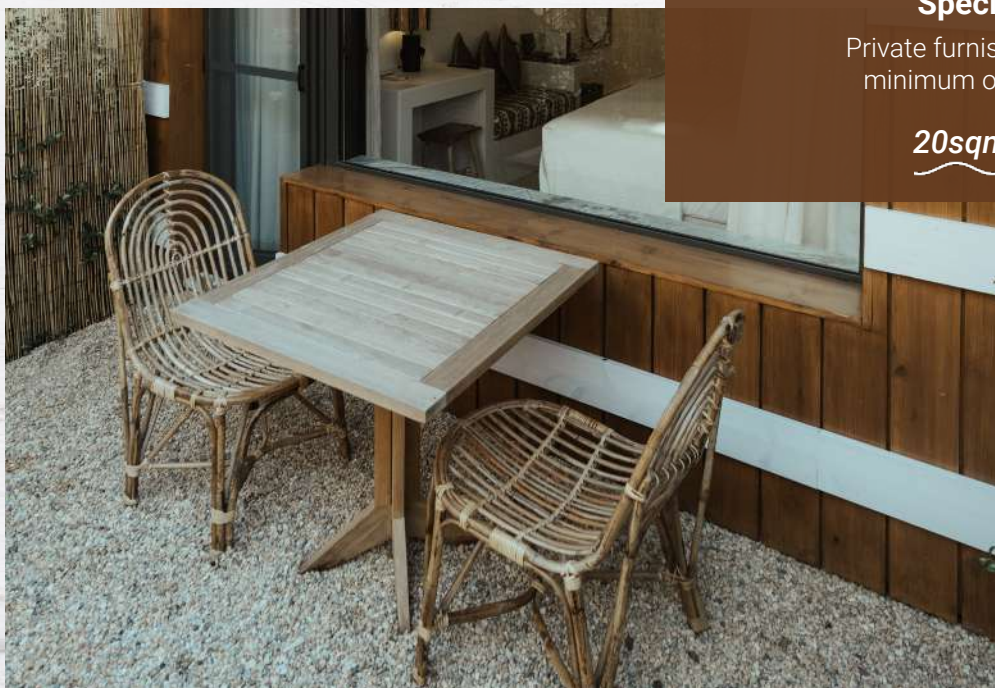
Garden Room

With a view of the courtyard, these rooms are designed and decorated in the Comporta style.

Special Feature

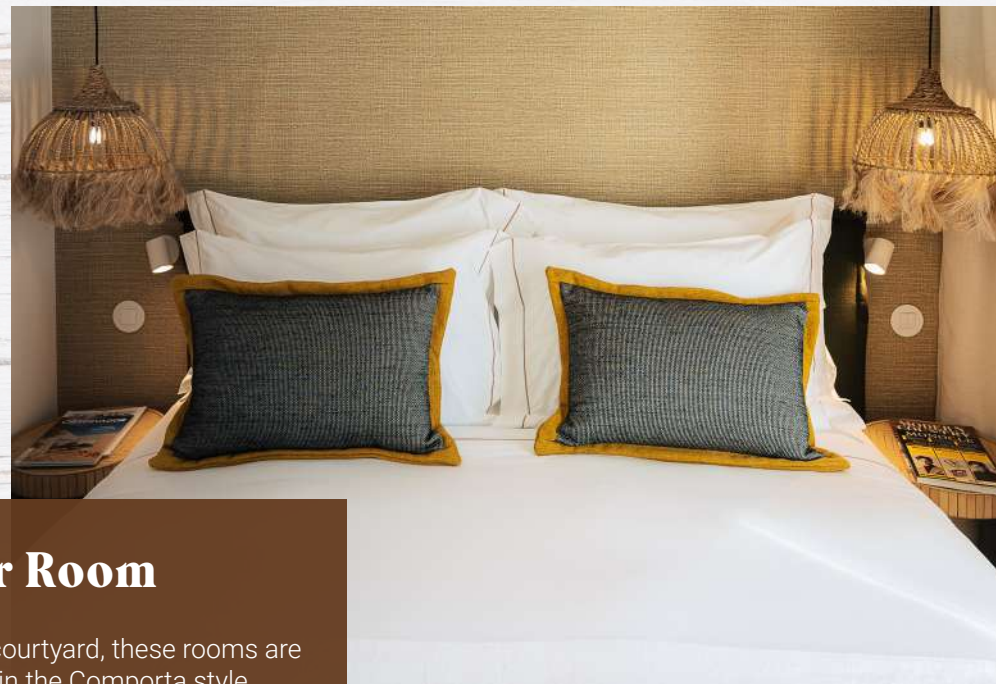
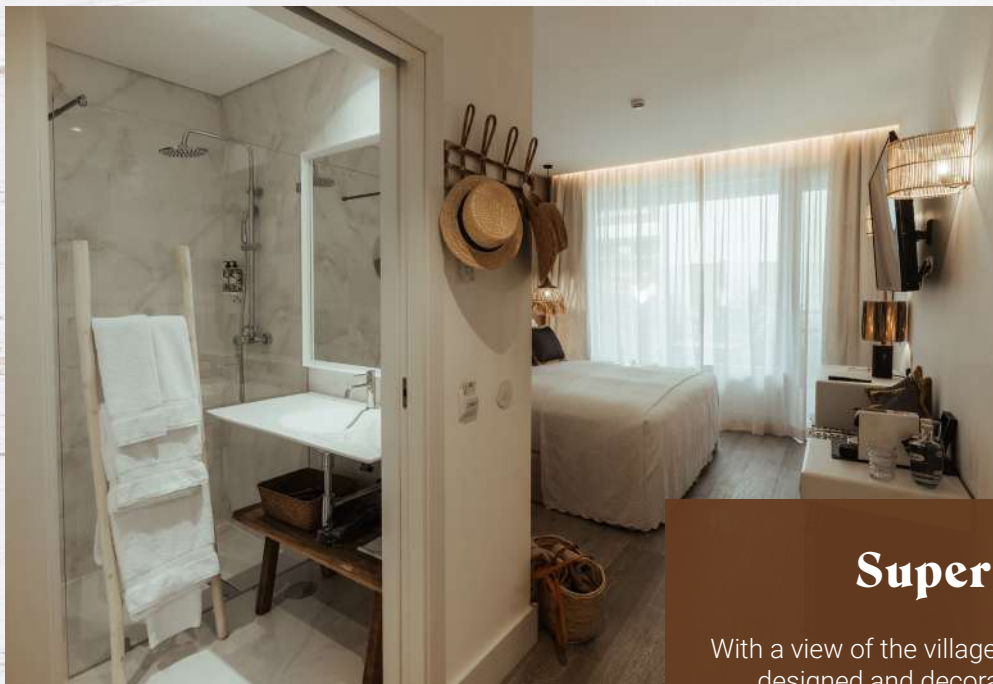
Private furnished garden, with a minimum of 10sqm/107sqft

20sqm - 215sqft



Superior Room





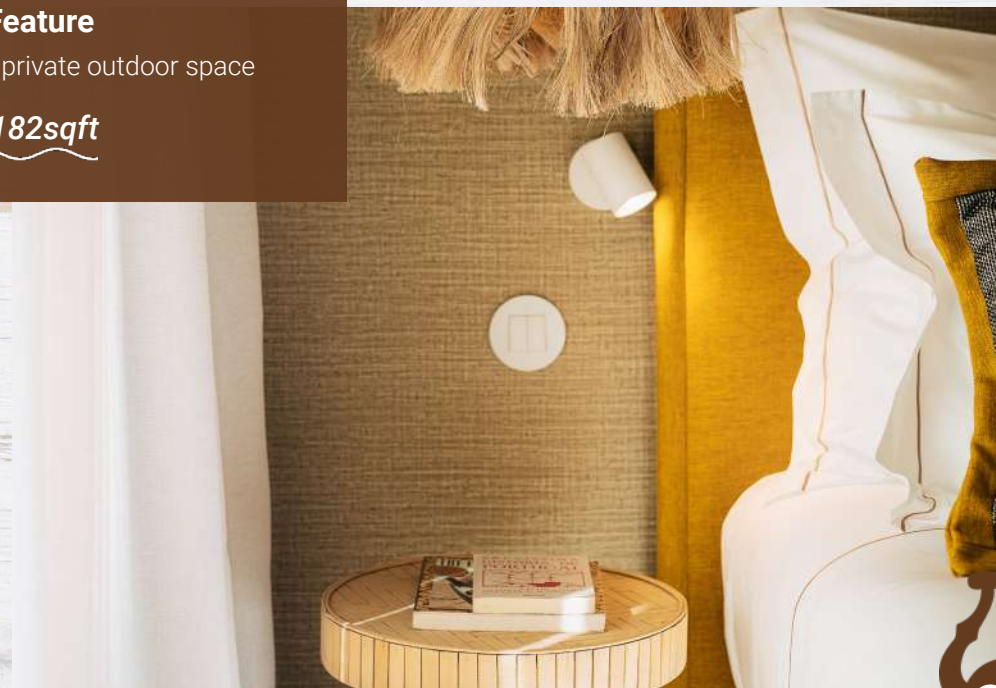
Superior Room

With a view of the village or courtyard, these rooms are designed and decorated in the Comporta style.

Special Feature

Entry level room, with no private outdoor space

17sqm - 182sqft





Single Room

This is our smallest room, with one person capacity. Designed and decorated in the Comporta style, it includes high-speed Wi-Fi, a 43" flat LG Smart TV and a single luxury bed.

13sqm - 139sqft

For those traveling with family or friends, our **Family Room** may be requested, a combination of our Single and Superior Rooms.

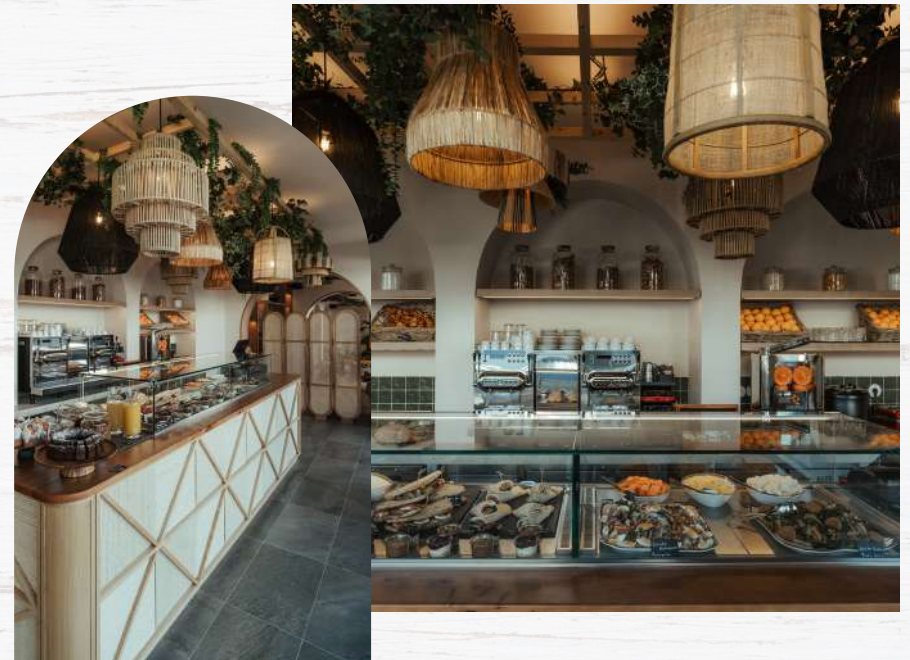
Food & Beverage

We base our work on a **strong social responsibility policy**. By not having a restaurant on-site, we encourage our guests to visit local restaurants. Our app, available on the [App Store](#) and [Google Play](#), includes a selection of the best places nearby.

At AlmaLusa Comporta, guests can enjoy different food and beverage options. All **menus** are available on our [website](#) and app.

AlmaLusa Café

At AlmaLusa Café, we offer delicious and healthy food options and refreshing beverages made with natural ingredients. Guests can enjoy the outdoor sitting area or take advantage of our Grab&Go Service to have their meal at the beach.



The RoofTop Bar

At The RoofTop Bar, guests can try our local tapas and healthy snacks and signature cocktails and mocktails, whilst enjoying the stunning views over the rice fields, in an unrivalled and relaxed atmosphere.



Duna Breakfast Room

A buffet breakfast is served daily in the Duna breakfast room. Bright and relaxed, this room includes an outdoor sitting area with a view of the swimming pool.

Our buffet breakfast includes a range of options to suit all tastes: artisan bread, viennoiseries, various hot dishes, fresh fruit, natural juices, yogurts and cereals. Lactose and gluten free options, plant-based drinks and yogurts are also available.



Library Bar

The Library Bar is the perfect haven. Cosy and intimate, it is the perfect space to enjoy a drink, read a book or have a meeting.

With an 85" screen and water sources, it is also the ideal venue to host small events or to watch sports or a movie.

Grab&Go Service

We do not provide our guests with Room Service. However, throughout the day, guests can request our Grab&Go Service. To do so, they need to head to the dining space of their preference to pick up their order. A special container will be prepared and handed to them, to take back to the room.

Available at the AlmaLusa Café, The RoofTop Bar, Library Bar and Duna breakfast room, during opening hours.



Pool Terrace

At AlmaLusa Comporta, guests can spend their days by the pool. A selection of light dishes and refreshing beverages is available through the Grab&Go Service at the AlmaLusa Café.



In a destination made for relaxation and restoration, AlmaLusa Comporta brought together a range of services for mind, body, and wellness. Please visit our [website](#) for detailed information.

Spa Suite by Elemental Herbology

Guests can indulge in an array of bespoke massages and treatments at our Spa Suite. The menu, launched in partnership with Elemental Herbology, brings together the art of relaxation and the power of nature for the ultimate wellness experience

Wellness Area

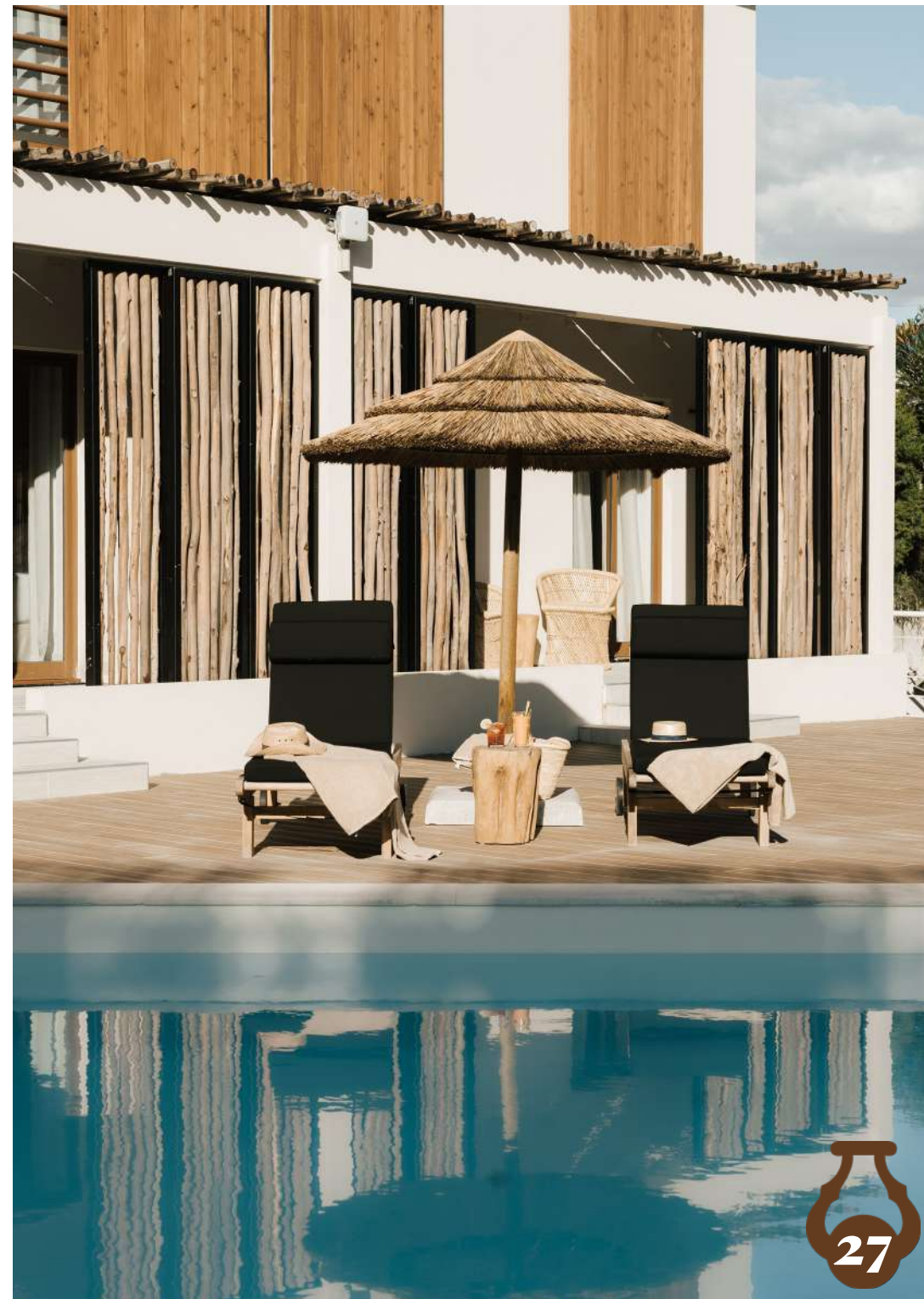
This outdoor area was designed to provide a holistic training experience, with a more natural and organic approach to exercise. Guests won't find traditional machinery, but, instead, a selection of fitness equipment for functional movements and total-body wellness.

Classes

With a view of the rice fields, we invite guests to join our wellness classes. Private and group classes available. All details [here](#).

Swimming pool

The outdoor swimming pool is perfect for a dip whilst enjoying Comporta's incredible atmosphere.





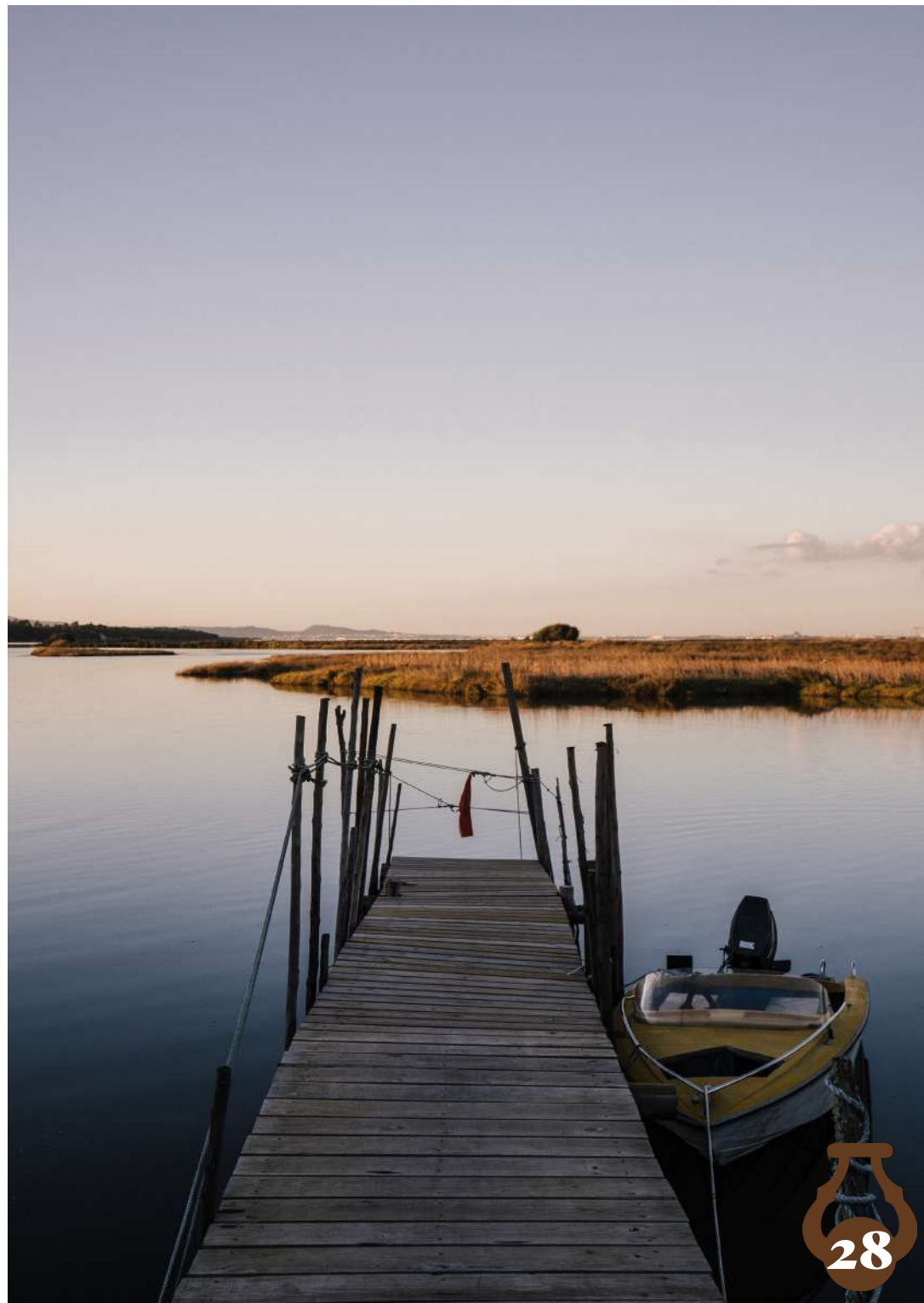
To help our guests uncover this incredible region, we have prepared a selection of **unmissable activities and experiences**: from Alentejo wine tastings and bike tours across the rice fields to local villages to horse riding on the beach and dolphin and flamingo watching tours.

We are also partnering with the **best golf courses**, including a world-class golf course that is due to open in Comporta in 2023.

Our Concierge service is available 24/7. Based on our guests' preferences, we create **tailor-made itineraries**, with restaurants, activities, and places to visit. We also take care of reservations and make sure that all booking processes run smoothly.

The AlmaLusa Hotels app

During their stay, guests have at their disposal a Samsung Smartphone with the "AlmaLusa Hotels" app, available on the [App Store](#) and [Google Play](#). The app includes tips, activities, restaurants, shops, itineraries, and all available services. Our Concierge team is also available 24/7 through the app's chat.





Location

Only **1 1/2 hrs away from Lisbon** and the main Portuguese airport, Comporta is the ideal destination for those who want to discover an off the beaten path location on the Alentejo coast.

AlmaLusa is conveniently located **in the heart of the village of Comporta**. Local stores, coffee shops and restaurants are easily accessible on foot and by bike. The nearest beach is only a 15-minute walk from the hotel.

As there is a lack of public transportation options in the region, we advise our guests to **rent a car** if they wish to properly explore the surroundings. Our Reception can assist with shuttles, car rentals and taxi bookings.

The hotel has its own **parking** with an additional cost. There is also free public parking available in the hotel's main street and behind the property. Parking around the village is quite easy during low season, but can get more challenging during summer months.



Policies

Check-in 4pm | **Check-out** 11am.

VAT is included in room **rates**.

Non-smoking property in line with legislation. Different restrictions may be applied to open air facilities.

Identification | For security purposes, check-in can only be processed with a valid ID document from each one of the guests.

Guarantee Policy | Reservations must be guaranteed with a valid credit card at the time of the booking. The amount of one night will be pre-authorised 8 days prior to arrival. The payment for the stay shall be made at check-in. Promotional or Pre-Paid Rates will be charged at the time of booking. If the Credit Card Holder is not travelling, a third-party authorisation form must be filled and signed, and a copy of his ID must be presented. The hotel reserves the right to refuse any reservation that does not meet these requirements. For more information, please contact us at info.cp@almalusahotels.com.

Group Reservation | The website booking engine can only be used to make individual reservations, less than five rooms. For bookings of five or more rooms, please contact the hotel. The hotel reserves the right to apply different group cancellation and payment policies.

Cancellations | Direct reservations can be cancelled or modified. To cancel or modify your reservation and avoid a no-show penalty, please contact us at reservas.cp@almalusahotels.com. Cancellations are only valid upon written confirmation from AlmaLusa Comporta. Not applicable to non-refundable rates and packages.

Early Check-In | To guarantee early check-in, before 4pm, make sure to book the room for the previous night. Contact us for more information.

Late Check-Out | Up to 12noon – complimentary and subject to availability. After 12noon – full daily room rate, subject to availability.

Additional Guests | Children up to 18 years old must be accompanied by adults. **Rooms** are for double occupancy only. A crib for children up to 3 years old might be placed in the room, subject to availability. **Suites** can accommodate up to 3 people, with the third person sleeping on a sofa bed. For more information and availability, please contact our Reservations department at reservas.cp@almalusahotels.com.

Disabled Guests | Our facilities are prepared for disabled guests. Please contact us for more information.

Dogs | More than 1 year old dogs up to 15kg are allowed in our Garden Suites, subject to availability. A fee of 30€ per day and per dog will be charged upon arrival. A deposit of 100€ will be charged at check-in and returned at the end of the stay if no extra cleaning procedure is required. Specific rules apply to dogs' stays. Please contact us for more information.

Parking | Limited indoor and outdoor parking spaces available, subject to a daily charge. Please contact us for more information.



In Summary

53 rooms, including 31 suites

Room type	Qt.	View	Area	Special Features
Single Room	1	Comporta Village	13sqm 139sqft	For 1 person or communicating with a Superior Room
Superior Room	13	Comporta Village or Courtyard	17sqm 182sqft	Entry level room
Garden Room	6	Courtyard	20sqm 215sqft	Private furnished garden with a minimum of 10sqm/107sqft
Terrace Room	1	Courtyard	20sqm 215sqft	12sqm/129sqft private furnished terrace
Superior Suite	9	Garden or Rice fields	37sqm 398sqft	Open-space suite with a living area and kitchen Can accommodate 1 adult or 2 children in a sofa bed No private outdoor space
Pool Suite	6	Pool	36sqm 387sqft	Open-space suite with a living area and kitchen Can accommodate 1 adult or 2 children in a sofa bed 8sqm/86sqft private furnished balcony with direct access to the pool
Garden Suite	4	Garden	37sqm 398sqft	Open-space suite with a living area and kitchen Can accommodate 1 adult or 2 children in a sofa bed 40sqm/430sqft private furnished garden
Terrace Suite	10	Pool or Rice fields	36sqm 387sqft	Open-space suite with a living area and kitchen Can accommodate 1 adult or 2 children in a sofa bed 30sqm/322sqft private furnished rooftop terrace, which can be accessed from outside by shared (with 1 other suite) stairs
Deluxe Suite	2	Rice fields	50sqm 538sqft	One-bedroom suite with living area and kitchen Can accommodate 1 adult or 2 children in a sofa bed Access to an 8sqm/86sqft balcony for 50€ extra/night



Address

Rua Pedro Nunes, 3
7580-652 Comporta

Phone

+351 265 098 600

Email address

info.cp@almalusahotels.com

www.almalusahotels.com

